



INDOFINE Chemical Company, Inc.

121 Stryker Lane, Bldg. 30, Suite 1 • Hillsborough, NJ 08844 • U.S.A.

Phone: (908) 359-6778 • FAX: (908) 359-1179

website: www.indofinechemical.com

e-mail: chemical@indofinechemical.com

CERTIFICATE OF ANALYSIS

Catalog Number: 020030

Product Name: LUPENONE

CAS Number: [1617-70-5]

Lot Number: 2310859

Chemical Formula: C₃₀H₄₈O

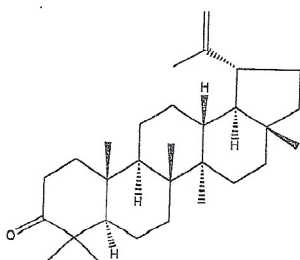
Molecular Weight: 424.71

Appearance: Off-white powder

Water Content: 0.9%

Storage: Store in a cool, dry place

Purity(HPLC): 99.9%



Prepared by:
Ramesh Mandadi
Ramesh Mandadi
Director of Operations

Reviewed and Approved by:
Sujata Moton
Sujata Moton
VP



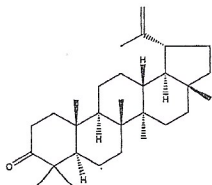
INDOFINE Chemical Company, Inc.

121 Stryker Lane, Bldg. 30, Suite 1 • Hillsborough, NJ 08844 • U.S.A.

Phone: (908) 359-6778 • FAX: (908) 359-1179

website: www.indofinechemical.com

e-mail: chemical@indofinechemical.com



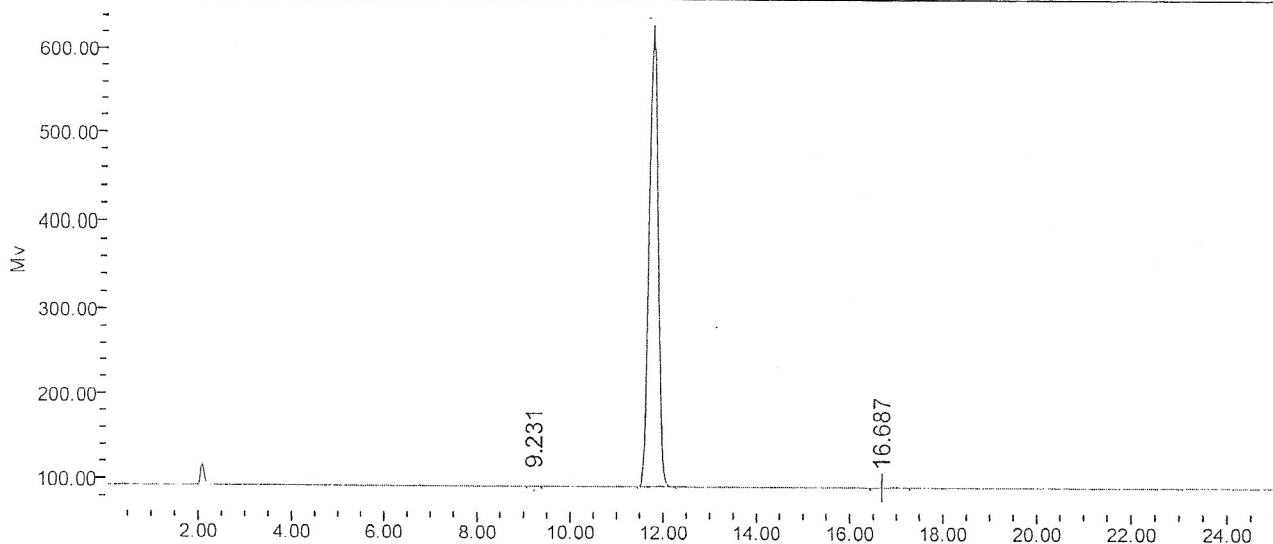
HPLC ANALYSIS

Catalog No.: 020030
Product Name: Lupenone
Lot No.: 2310859

SAMPLE INFORMATION

Sample Name: Lupenone
Sample Type:
Vial: 70, 79
Injection #: 1, 2
Injection Volume: 20.00 ul
Run Time: 25.0 Minutes

Acquired By:
Sample Set Name:
Acq. Method Set: Lupenone
Processing Method: sample
Channel Name: SATIN
Proc. Chnl. Descr.:



Peak Results

	Name	RT	Area	% Area	USP Plate Count	USP Resolution
1		9.231	1496	0.02	32517.48	
2		11.759	7089641	99.92	16807.61	8.29
3		16.687	4182	0.06	13257.76	11.01
4						

Prepared by:
Ramesh Mandadi
Ramesh Mandadi
Director of Operations

Reviewed and Approved by:
Sujata Moton
Sujata Moton
VP